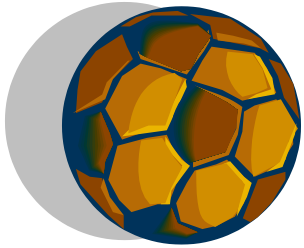
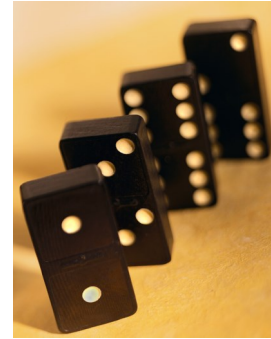
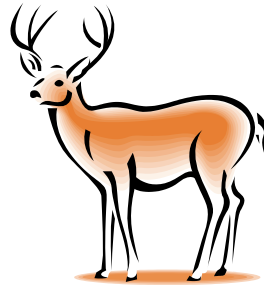
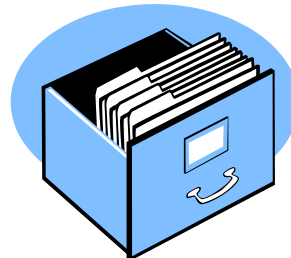
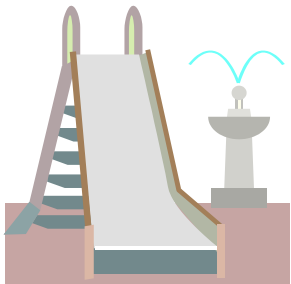
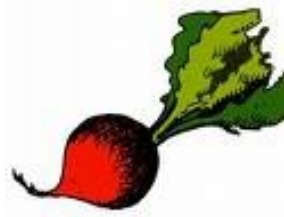


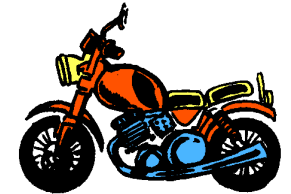
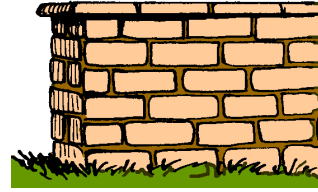
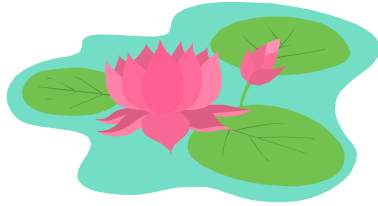
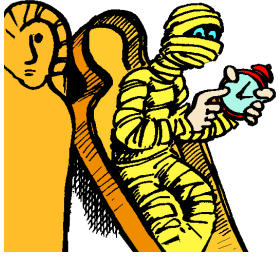
Consigne : Place la syllabe entendue dans le mot (dans le cadre blanc)



Consigne : Place la syllabe entendue dans le mot (dans le cadre blanc)



Consigne : Place la syllabe entendue dans le mot (dans le cadre blanc)



Consigne : Place la syllabe entendue dans le mot (dans le cadre blanc)

